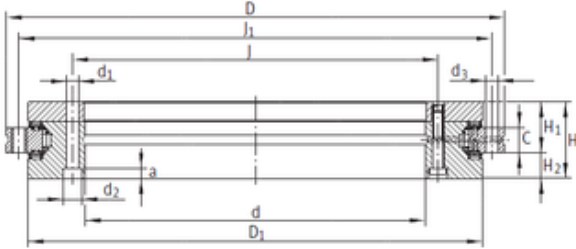




# NTN Bearing Driveshaft do Brasil

## INA YRTS200 complex bearings



Bearing No. YRTS200

YRTS200 Bearing 2D drawings and 3D CAD models

Size	200x300x15 mm
Bore Diameter	200 mm
Outer Diameter	300 mm
Width	15 mm
d	200 mm
D	300 mm
C	15 mm
H	45 mm
a	6,2 mm
d1	7 mm
d2	11 mm
d3	7 mm
D1	274 mm
H1	30 mm
H2	15 mm
J	215 mm
J1	285 mm
Weight	9,7 Kg
Dynamic load rating radial (C)	94 kN
Dynamic load rating axial (C)	155 kN
Static load rating radial (C0)	226 kN
Static load rating axial (C0)	840 kN