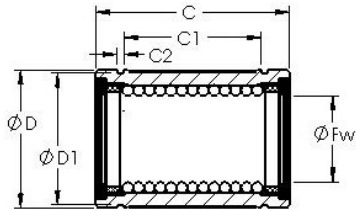


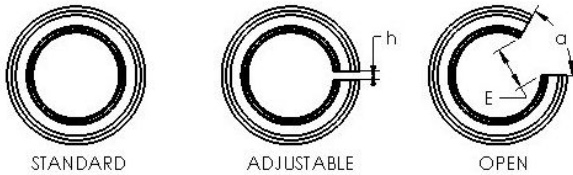


NTN Bearing Driveshaft do Brasil



AST LBE 8 AJ linear bearings

Bearing No. LBE 8 AJ



Bore Diameter	8 mm
Bearing Type	adjustable clearance type
Dynamic Load Rating (Cr)	121
Static Load Rating (Cor)	255
Shaft Dia. (Fw)	8.000
Outside Dia. (D)	16.000
Length (C)	25.000
Groove-to-groove length (C1)	14.000
Groove Width (C2)	1.100
Groove Dia. (D1)	14.300
Adjustable Open Gap (h)	1.500
Weight (g)	16.60
Material	52100 chrome steel, or equivalent

LBE 8 AJ Bearing 2D drawings and 3D CAD models