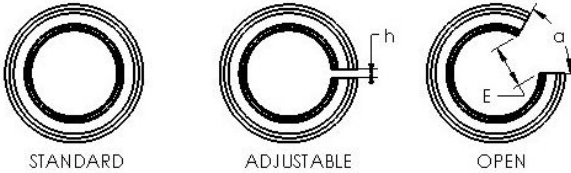
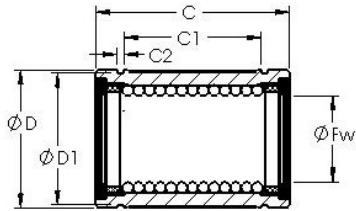




# NTN Bearing Driveshaft do Brasil

## AST LBE 12 UU OP linear bearings

Bearing No. LBE 12 UU OP



Bore Diameter	12 mm
Bearing Type	sealed, open type
Dynamic Load Rating (Cr)	284
Static Load Rating (Cor)	575
Shaft Dia. (Fw)	12.000
Outside Dia. (D)	22.000
Length ( C )	32.000
Groove-to-groove length (C1)	20.000
Groove Width (C2)	1.300
Groove Dia. (D1)	21.000
Open Gap (E)	7.500
Open Gap (a deg.)	78.00
Weight (g)	29.50
Material	52100 chrome steel, or equivalent

LBE 12 UU OP Bearing 2D drawings and 3D CAD models